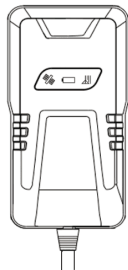




GSM/GPRS/GPS Tracker GPS-ECO.V2 User Manual



Car/Motorcycle/Scooter GPS Tracking Device

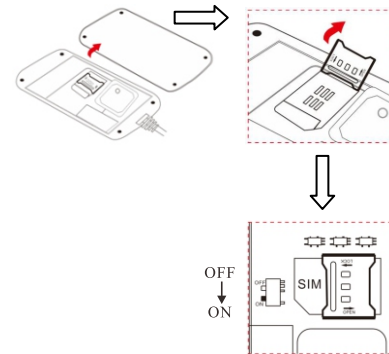
1.Specs.

Content	Specs.
Dim.	90 (L) x49.3(W)x16.7(H)
Weight	50g
Network	GSM/GPRS/GPS, TCP/IP
Band	850/900/1800/1900 Mhz
GPS sensitivity	-159dBm
GPS accuracy	5-10m
Time To First Fix	Cold status 45-90s Warm status 35s Hot status 1s
Work voltage	12-24V
Storage Temp.	-40°C to +85°C
Operation Temp.	-20°C to +45°C
Humidity	15%--95%

2. Install SIM Card

Preparation: insert 2G GSM SIM card with activated GPRS data; Make sure SIM card with full balance; If SIM card with PIN code, must remove it advance.

- Open back cover from the small hole near shell edge → Take off screws as below → Switch ON/OFF button to “on” place



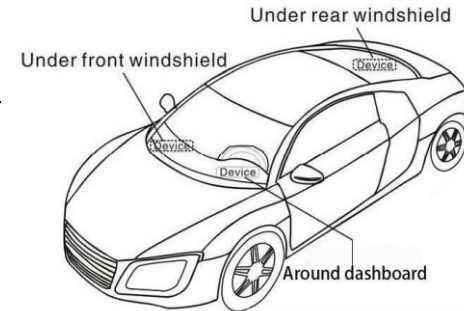
3.Device light description

Light	Signal	Normal status
Red light	Power	Constant light on
Green light	GSM signal	Constant light on
Blue	GPS signal	Constant light on

Note: Device will turn into sleep mode with lights off after around 3 minutes, it will wake up if make a call to device number or detect any vibration.

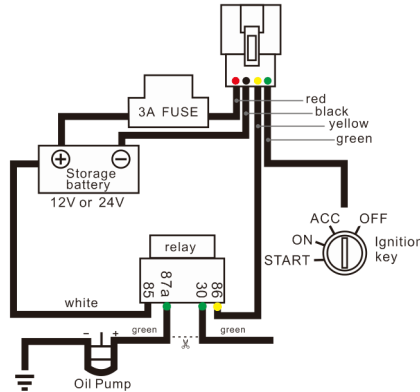
4.Installation

The device has built-in GSM and GPS antenna, make sure front side upward and there is no metal shielding.



5.Wires connection

Relay is optional function for cutting fuel,
you can connect wires accordingly to actual demand.
If no need it, just leave it alone.



Start to Use

Note: All Alarms only will be sent to Central Number Only

Default password 123456,use phone to send SMS as below list to tracker's number, please don't type "+" "space". Each command must reply "OK". Check world APN website http://bigfun.tripod.co.uk/		
Function	Format	SMS Command
Step 1 Set APN	Format	apn123456+space+localApn+space+ApnName+space+ApnPassword
	Eg.	apn123456 tim.br tim tim
Step 2 Set IP Port	Format	adminip123456+space+IP+space+port
	Eg.	adminip123456 121.201.110.210 8989
Step 3 SMS Locate	Format	smslink123456

More features but not necessary, support SMS/Platform Command		
Cut off fuel or power	Format	DY123456+space+1
	Eg.	DY123456 1
Resume fuel or power	Format	TY123456+space+1
	Eg.	TY123456 1
Check device status	Format	check123456
Set center number	Format	centernum123456+space+phone number
Cancel center number	Format	centernum123456
Set Power Cut alarm	Format	extpower123456+space+1
	Eg.	extpower123456 1
Cancel Power Cut alarm	Format	extpower123456+space+0
Initialization factory setting	Format	begin123456

Authorization number	Format	admin123456+space+cell phone number
	Eg.	admin123456 13812345678
Cancel authorization	Format	noadmin123456+space+number
Time Zone Setting	Format	timezone123456+space+(timezone*60)
	Eg.	GMT-6, SMS "timezone123456-360".
Set Time Interval	Format	ITV123456+space+upload time interval
	Eg.	ITV123456 10
Set overspeed alarm	Format	speed123456+space+80
Cancel overspeed alarm	Format	speed123456+space+0
Set ignition on alarm	Format	ACC123456+space+1
Cancel ignition on alarm	Format	ACC123456+space+0
Change Password	Format	password123456+space+new password

◆ Web GPS Tracking Software & Android & IOS APP

Website: www.secumore1818.com

Default IMEI as user name, password 123456.

If failed to login, please contact supplier to register IMEI.

Guarantee Card

User Name		Phone	
Purchase Date		IMEI No	
1.Within warranty period, if any damage caused by the product's own quality, user can bring the purchasing invoice and warranty card to supplier to arrange repair. 2.Those machines that has refitted or added other functions by user own will not be accepted to repair. 3.Attempt to disassemble the product can damage it and void your warranty. 4.This card and the purchasing invoice are both considered as a receipt for repair, please reserve it carefully			